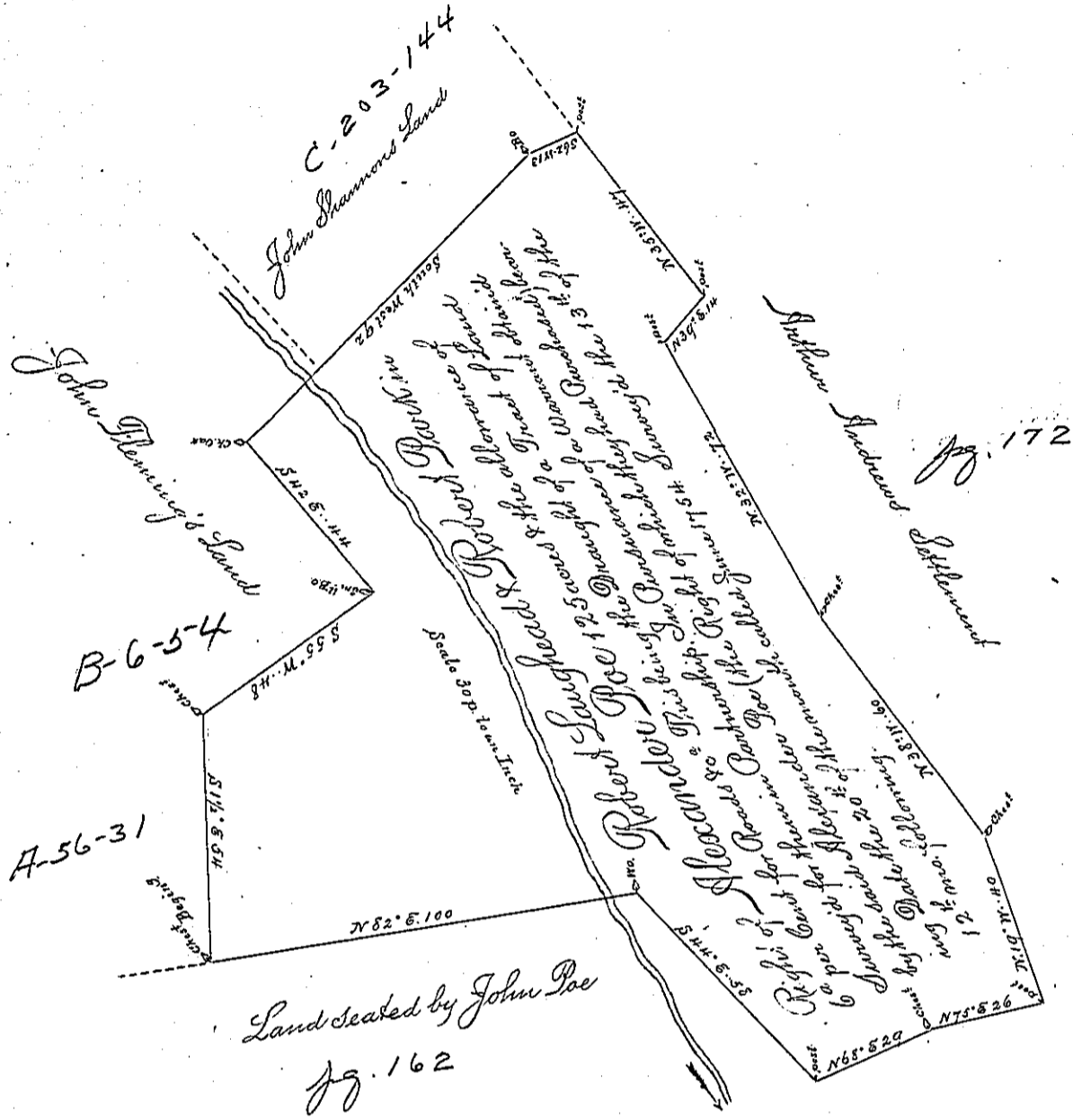


Set out
Eden Twp.



The Tract of Land Described by this Draught Lays on a Branch of Octoraro Creek In Part
Township In the County of Lancaster

Certified By
Geo. Churchman D.S.

IN TESTIMONY that the above is a copy of the original remaining on file in the Department of
Internal Affairs of Pennsylvania, made conformably to an Act of Assembly
approved the 16th day of February, 1833, I have hereunto set my Hand
and caused the Seal of said Department to be affixed at Harrisburg, this

Eight day of *March* 1890.

James W. Little
Secretary of Internal Affairs.